

55

Grades for Side walk
E. Side Adams Bet. 25th & 24th Sts

25 th -Adams	+	H.I	-	Grade
Mon. B.M	9.772	4369.480	Grade rod	4359.708
110+79	End of old walk	4.95		4364.53
to 114+79±				

THURS Aug 17-04
Lentz
Shank
Chambers

24th Street

114+79±

Adams Ave

Curb

Hand line

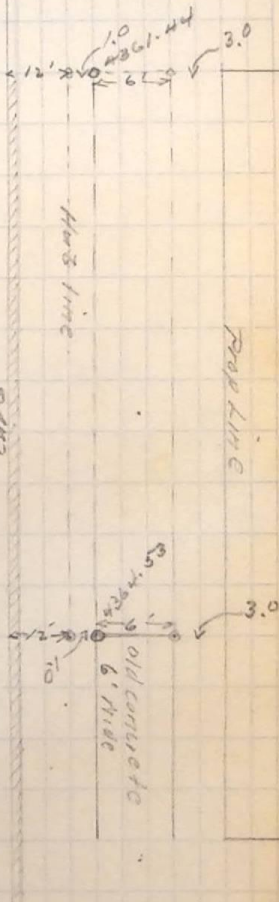
Prop Line

110+79.

108+11.9

25th

Street



4359.708